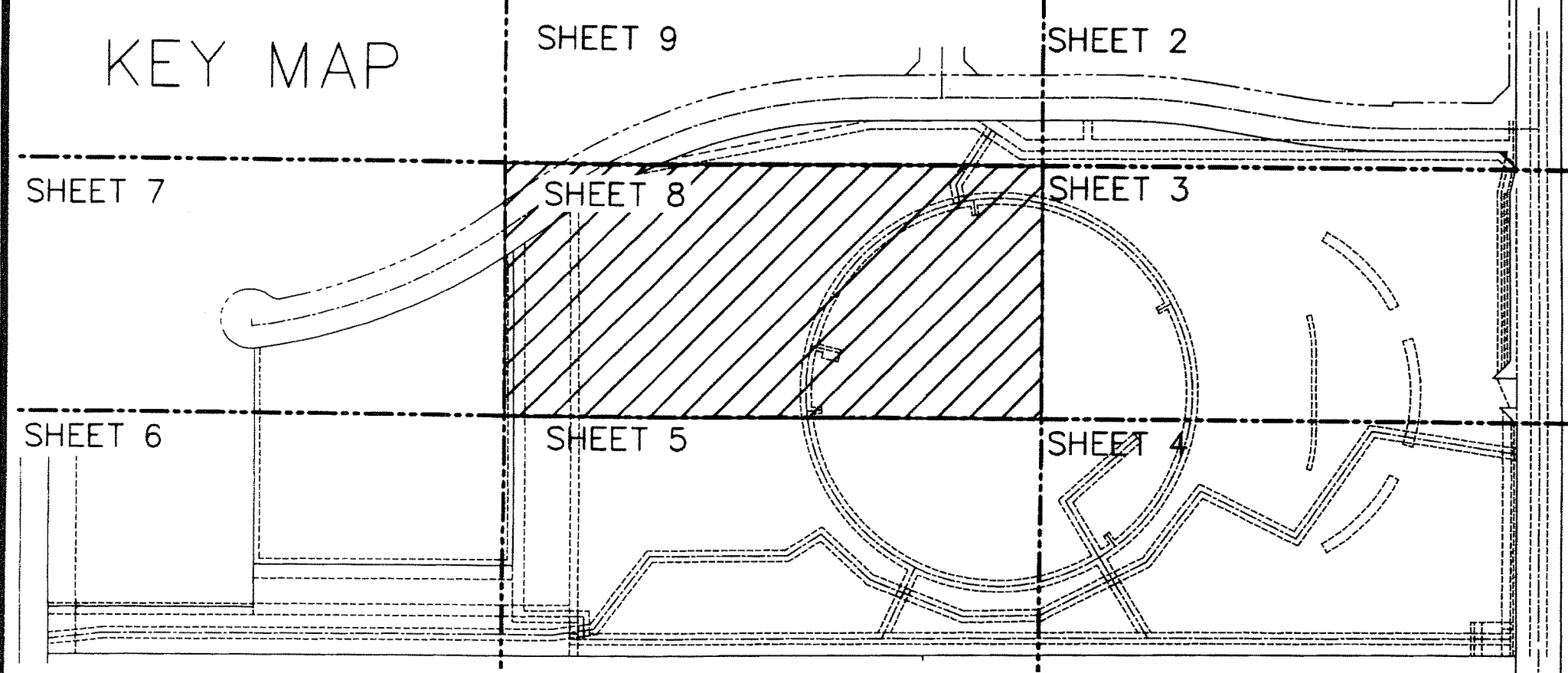


KEY MAP

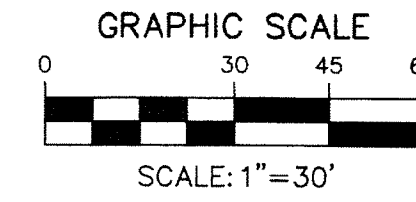
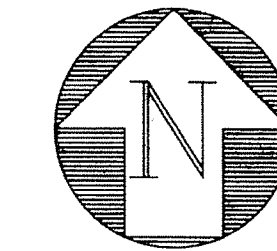


0457-003

BETHESDA HEALTH CARE MUPD

BEING A REPLAT OF A PORTION OF PARCEL B-2 AND A PORTION OF PARCEL A-2 OF BOYNTON BEACH ENTERPRISE CENTER PLAT NO. 2 AS RECORDED IN PLAT BOOK 79, PAGE 152, LYING IN SECTION 28, TOWNSHIP 45 SOUTH, RANGE 42 EAST, PALM BEACH COUNTY, FLORIDA

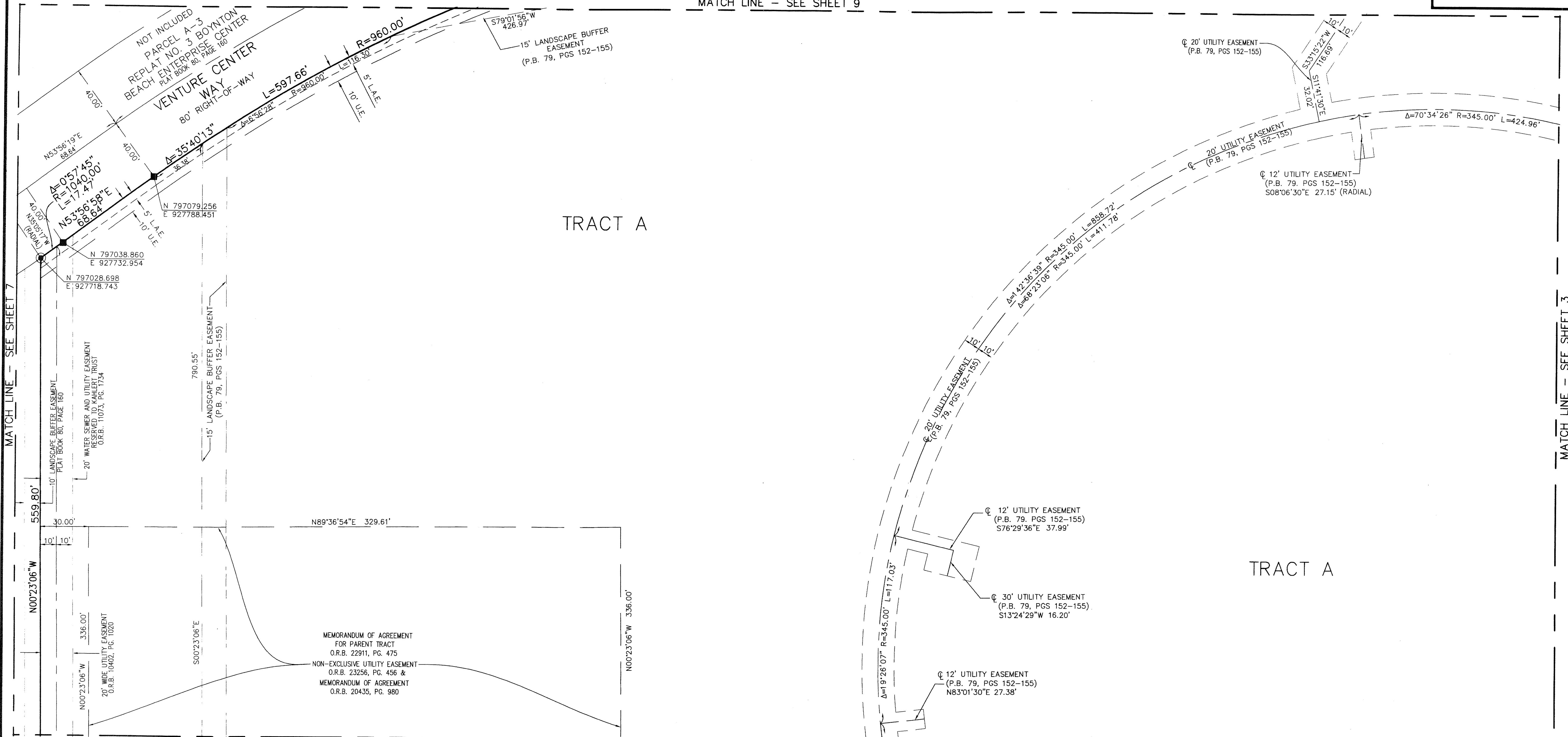
SHEET 8 OF 9



STATE OF FLORIDA }
 COUNTY OF PALM BEACH } S.S.
 THIS INSTRUMENT WAS FILED FOR
 RECORD AT _____
 THIS ____ DAY OF _____
 201 ____ AND DULY RECORDED
 IN PLAT BOOK NO. _____
 ON PAGE _____
 SHARON R. BOCK,
 CLERK AND COMPTROLLER
 BY: _____ D.C.

165

MATCH LINE - SEE SHEET 9



TRACT A

TRACT A

MATCH LINE - SEE SHEET 7

MATCH LINE - SEE SHEET 3

MATCH LINE - SEE SHEET 5

LEGEND

- | | | |
|--|---|---|
| <ul style="list-style-type: none"> ☉ CENTERLINE D.B. DEED BOOK D.E. DRAINAGE EASEMENT FPL FLORIDA POWER & LIGHT O.R.B. OFFICIAL RECORD BOOK P.B.C.P.R. PALM BEACH COUNTY PUBLIC RECORDS P.B. PLAT BOOK P.O.B. POINT OF BEGINNING P.O.C. POINT OF COMMENCEMENT PG. PAGE | <ul style="list-style-type: none"> R.P.B. ROAD PLAT BOOK R/W RIGHT-OF-WAY (C) CALCULATED (D) DEED (P) PLAT ■ SET 4" X 4" CONCRETE MONUMENT WITH ALUMINUM DISK STAMPED P.R.M. LB#6603 □ FOUND PERMANENT REFERENCE MONUMENT AS NOTED ● SET MAG NAIL AND DISK PRM LB#6603 ● SET #5 IRON ROD AND CAP ENGENUITY LB#6603 | <ul style="list-style-type: none"> R RADIUS L LENGTH Δ DELTA ANGLE PRM PERMANENT REFERENCE MONUMENT PK PARKER KAYLON PLS PROFESSIONAL LAND SURVEYOR PBCUE PALM BEACH COUNTY UTILITY EASEMENT |
|--|---|---|

BETHESDA HEALTH CARE MUPD

A Higher Standard of Excellence
engenuity
 ENGINEERS • SURVEYORS • GIS MAPPERS group inc.
 1201 BELVEDERE ROAD, WEST PALM BEACH, FLORIDA 33405
 PH (561) 855-1151 • FAX (561) 832-9390
 WWW.ENGENUITYGROUP.COM

DATE	11/28/13
SCALE	1" = 30'
CAD FILE	5013.07PL01
SDSK PROJECT	5013.07
DRAWN	STAFF
CHECKED	K.BECK

SHEET
8/9
 JOB NO.
5013.07

Y:\Land Projects R2\5013.07\dwg\5013.07PL01(STATE PLANE).dwg 7/2/2014 8:21:31 AM EDT